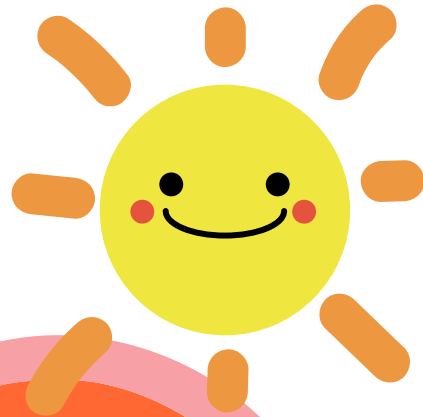




Welcome!



PRE-K

2025-26

Rising Rockets
Pre-K Preview

Agenda



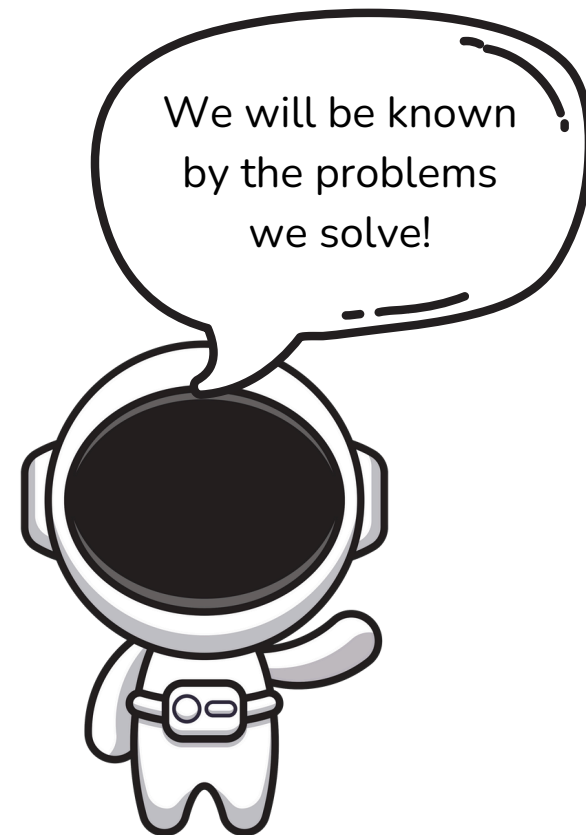
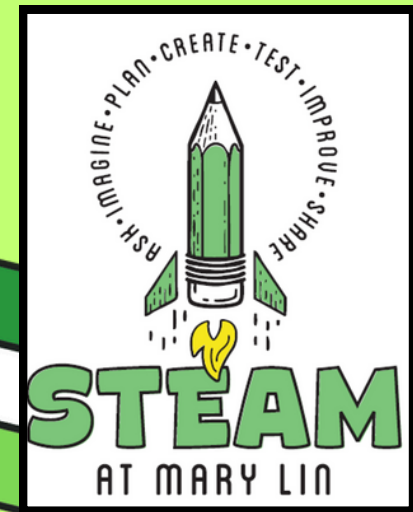
- **Introductions**
- **About Mary Lin**
- **School Supplies**
- **Drop-off & Pick-up**
- **Aftercare Options**
- **Typical Pre-K Day**
- **School Meals**
- **Volunteering @ Lin**
- **Mary Lin PTO**

Use the QR code
below to visit our
website!



About Mary Lin

- Founded in 1929
- Serves the Candler Park and Lake Claire Neighborhoods, part of **Midtown Cluster in APS**
- **Signature Program:** STEAM
- **Vision:** Our vision is to foster students who are lifelong, proactive learners. Our students will be clear communicators who use innovative problem-solving to address the complex issues facing our community and world.
- **Mission:** The mission of Mary Lin Elementary is to educate our students through meaningful, interdisciplinary experiences. Partnerships among students, teachers, and the community will prepare our students to be caring and creative risk-takers ready for the world.



School Supplies



Essential Items (LABEL EVERYTHING!)

- Complete change of clothes (shirt, pants, underwear, socks) sent in a labeled gallon sized bag. Remember to update when seasons change!
- Backpack (large enough to fit a folder and lunchbox)
- Lunchbox (if bringing lunch from home)
- Refillable LEAKPROOF water bottle
- Small blanket or stuffy for nap (will go home on Fridays)



Drop-off & Pick-up



Carpool - Students are dropped off in front of the building and will enter through the main entrance.

Bus - Students will enter/exit through the back entrance into the bus loop.

Walkers and Bike Riders - Pre-K students walk in the main entrance of the building, directly into the Pre-K/K hallway.

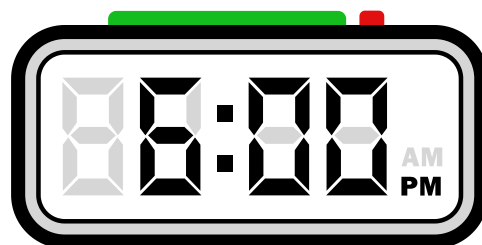
After Care Options



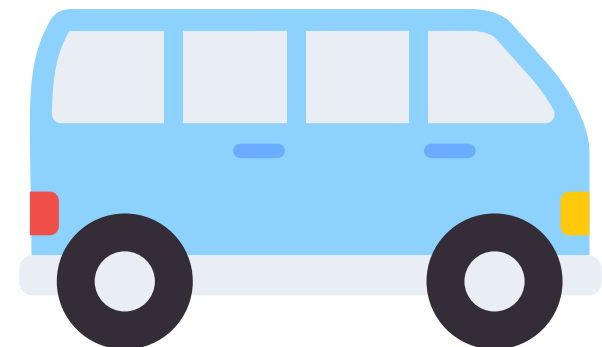
On-Site Aftercare



Latest iKids
pick-up time
is...



Off-Site Aftercare



Typical Pre-K Day



- **Arrival Begins:** 7:15 am
- **Instruction Starts:** 7:45 am
- Social Emotional Learning/Morning Meeting
- Phonics/Reading/Writing Foundations
- Recess (30 min)
- Lunch (30 min)
- Math & Early Numeracy Skills
- Nap (60 min)
- Science/Social Studies Stations
- Creative Play
- **Dismissal:** 2:15 pm

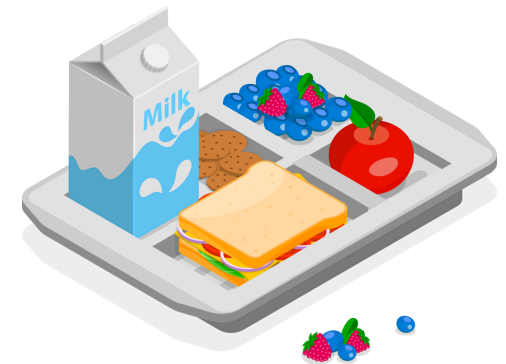
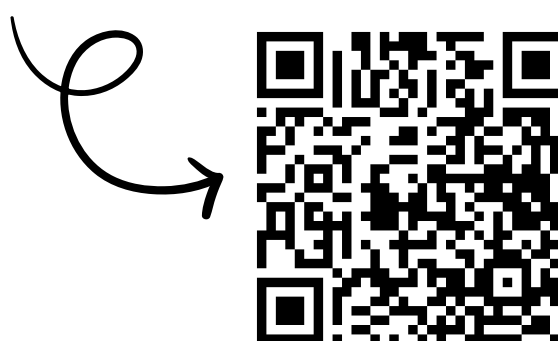


School Meals



- Pay for breakfast and lunch via the **MySchoolBucks** Platform.
- Breakfast closes at **7:40 am** - come early if you want breakfast!
- Breakfast - \$1.50
- Lunch - \$3.00
- Complete the **Federal Eligibility Application** - you might qualify for free or reduced lunch!

MySchoolBucks



Mealviewer - Menus



MARY LIN ELEMENTARY SCHOOL

BREAKFAST					English					AUGUST 2025					<	>	🖨️
MONDAY		TUESDAY		WEDNESDAY		THURSDAY		FRIDAY		JULY		SEPTEMBER					
28		29		30		31		1									
No Information Provided		No Information Provided		No Information Provided		No Information Provided		ENTREE Tater Tot Breakfast Burrito <i>burrito</i> Zucchini Bread w/ Cheese Stick <i>each</i> Cheerios Cereal with Graham Crackers <i>cereal bowl + 1 pack</i> Cinnamon Toast Crunch Cereal with Graham Crackers <i>cereal bowl + 1 pack</i> Cocoa Puffs Cereal with Graham Crackers <i>cereal bowl + 1 pack</i>									
								FRUIT Fresh Orange <i>Orange</i> Juice, Grape, 100%, Suncup <i>each</i>									
								CONDIMENTS Ketchup Packet <i>Packet</i> Jelly Packet <i>each</i>									
4		5		6		7		8									
ENTREE French Toast Sticks <i>serving (4 sticks)</i> Banana Muffin, w/ Cheese Stick <i>muffin + 1 cheese st</i>		ENTREE Chicken Biscuit Sandwich [ES/MS] <i>sandwich</i> Strawberry Cream Cheese Mini		ENTREE American Breakfast Sandwich <i>sandwich</i> Double Chocolate Chip Muffin w/		ENTREE Scrambled Eggs (0.25) <i>cup</i> Biscuit, Baked, WG, Easy Split <i>each</i> Bread Breakfast Apple Cinnamon		ENTREE Pancake Stacker Sandwich <i>sandwich</i> Pineapple Parfait w/ Granola <i>parfait</i>									

Nutrition Calculator

Your meal's
nutrition
information

Use this new tool to quickly
choose food items and see the
nutritional calculations!



Let's add it up →

Volunteer Levels



No Formal Volunteer Clearance Needed

Volunteering in any capacity where you may interact with or supervise students **with a staff member present.**

Lunch Visitors, Class Party Helpers, Mystery Readers, Media Center & STEAM Lab Volunteers, PTO Volunteers

Level 3 Volunteer

Volunteering in any capacity where you may interact with or supervise students **without a staff member present.**

Field Trip and 5th Grade Trip Chaperones, Staff Holiday Party Volunteers

Level 3 Clearance



How do I
become a Level
3 Volunteer?

- Fill out the **Volunteer Release Form**.
- Fill out the **Background Check Release Form**.
- Make a copy of your ID (DL or a valid Passport).

- Send email to marylinvolunteers@apsk12.org so Ms. Wheeler can help you coordinate a Background Check appointment.
- Bring completed forms with you to your appointment.

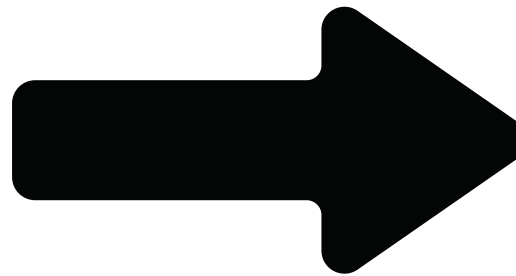
Volunteer Release
Form



Background Check
Form



Introducing the... Mary Lin PTO!

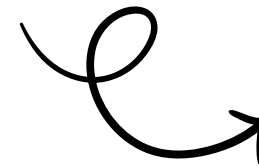


Join the PTO!

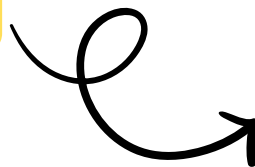


- ✓ EDUCATIONAL SUPPLIES
- ✓ FAMILY VOLUNTEERS
- ✓ SPECIAL EVENTS
- ✓ TEACHER SUPPORT
- ✓ CAPITAL IMPROVEMENTS
- ✓ CLASSROOM RESOURCES

Scan to become a PTO
member today!



**Sign up for the Rocket
Blast our PTO Weekly
Newsletter!**





Questions?

Denise Bringslid

Principal

dmb bringslid@apsk12.org

Amy Wheeler

Parent Liaison

amy.wheeler1@apsk12.org

Carol Evans

Pre-K Lead Teacher

cgevens@apsk12.org

